

RAMS-2011-T - 16 GAUGE SLITTER (Tabletop)



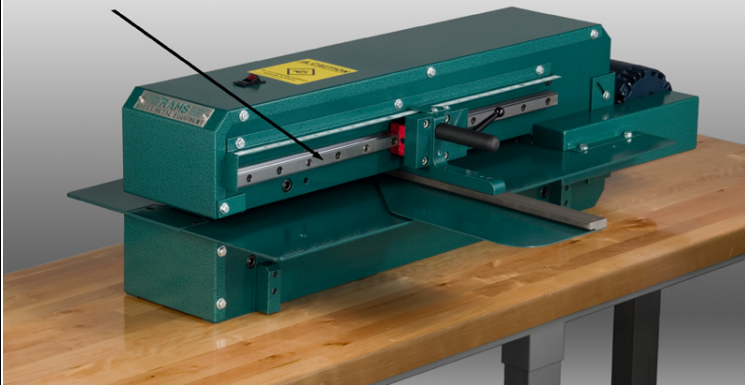
Providing Solutions.

Phone: 916-638-7718 Fax: 916-638-2450

www.scottmachinery.com

4700 Lang Ave, Suite D, McClellan, CA 95652

THK Bearing Slide Rail for Effortless
One Hand Adjustment



Easy to Read Scale



Specifications

CAPACITY: 16 GA. MILD STEEL

MIN. SLIT WIDTH: 3/4"

MAX. SLIT WIDTH: 24-3/8"

APPROXIMATE SPEED: 65 FPM

DIMENSIONS: 36" L X 28" W X 6" H

APPROXIMATE WEIGHT: 375 LBS.

The highlight of this machine is the THK Bearing Slide Rail for effortless one hand adjustments. There is also an easy to read scale and an adjustable top cutter, eliminating the need for shims. The unit comes with a 1 H.P. electric motor, 115/208-230V, 1,725 RPM. The cabinet is heavy gauge steel with a Hammertone Green Finish.

Made in the USA